



C20-MET-306

7292

BOARD DIPLOMA EXAMINATION, (C-20)  
OCTOBER/NOVEMBER—2023  
DMET – THIRD SEMESTER EXAMINATION

MACHINE DRAWING

Time : 3 Hours ]

[ Total Marks : 60

**PART—A**

5×4=20

**Instructions :** (1) Answer **all** questions.

(2) Each question carries **five** marks.

(3) All dimensions are in mm.

(4) Choose suitable scale.

1. Draw the following screw thread profiles with standard proportions :

(a) Square thread 2½

(b) Knuckle thread 2½

2. Draw the front view and top view of a single riveted lap joint for joining plates of thickness 9 mm following standard proportions. 2+3=5

3. Draw the single line symbols for the following pipe fittings : 1×5=5

(a) Coupling

(b) Lateral

(c) Globe valve

(d) Reducer

(e) Plug

4. Draw the following weld symbols : 1×5=5

(a) Single J butt weld

(b) Fillet weld

(c) Flat single V butt weld

(d) Seam weld

(e) Spot weld

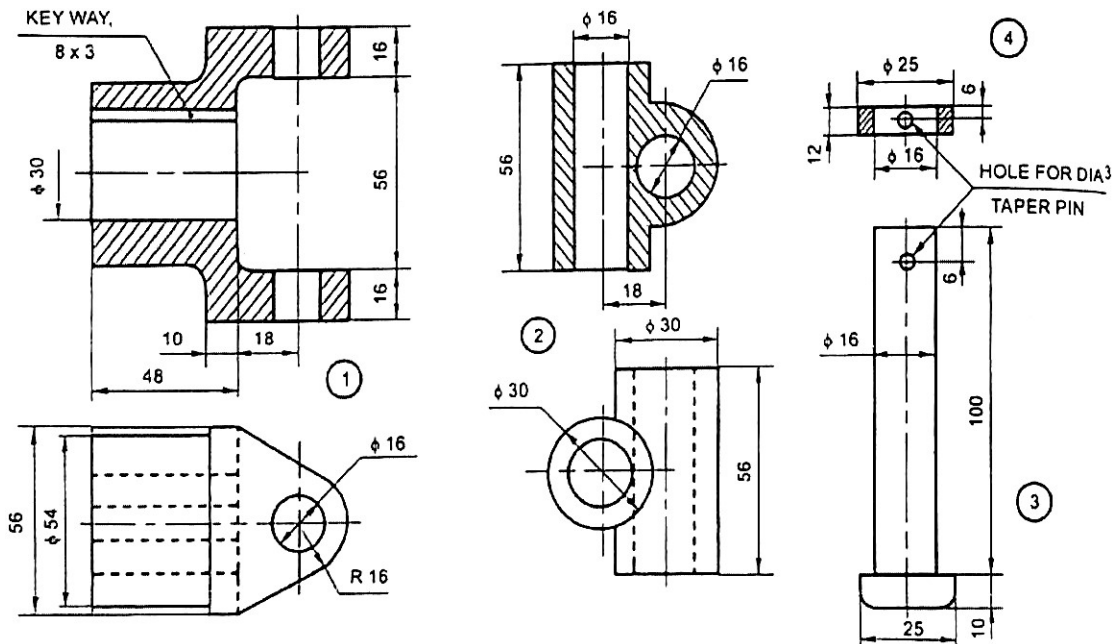
**PART—B**

40×1=40

- Instructions :** (1) Answer *any one* questions.  
 (2) Each question carries **forty** marks.  
 (3) All dimensions are given in mm.  
 (4) Choose suitable scale.

**5.** Assemble the parts of a universal coupling by using the part drawings given below and draw the following :

- (a) Full sectional front view 20  
 (b) Top view 15  
 (c) Dimensions 5



Parts list

No.	Name	Matl	Qty
1	Fork	MS	2
2	Centre block	MS	1
3	Pin	MS	2
4	Collar	MS	2

6. Assemble the parts of a footstep bearing by using the part drawings given below and draw the following :

(a) Full sectional front view

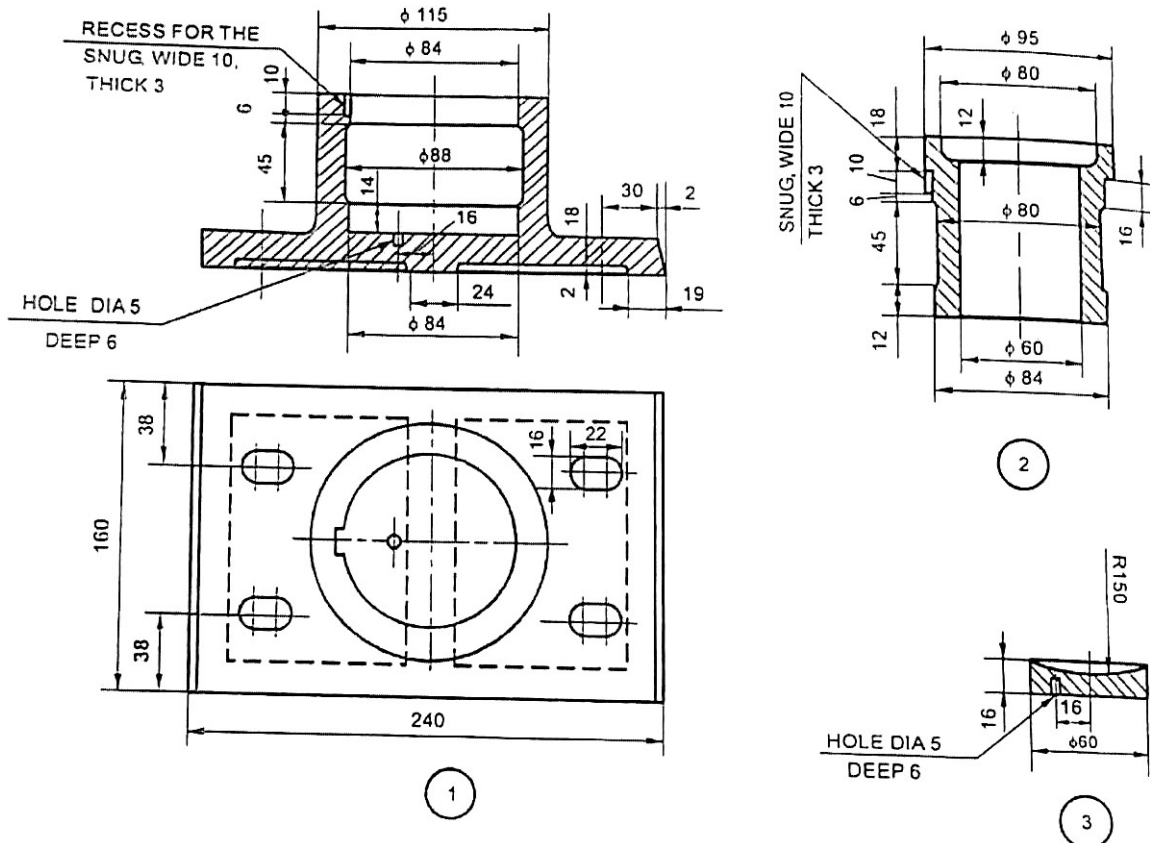
20

(b) Top view

15

(c) Dimensioning

5



Parts List

No.	Name	Material	Qty
1	Body	Cast Iron	1
2	Bush	Brass	1
3	Disc	P Bronze	1
4	Shaft	Mild Steel	1
5	Pin	Mild Steel	1

