



C09-M/MET-307

3251

**BOARD DIPLOMA EXAMINATION, (C-09)  
OCTOBER/NOVEMBER-2018  
DME-THIRD SEMESTER EXAMINATION**

**MACHINE DRAWING**

Time : 3 Hours ]

[ Total Marks: 60

**PART-A**

5X4=20

- Instructions :**
1. Answer **All** questions.
  2. Each question carries FIVE marks
  3. Draw neatly (not to scale) and show the standard proportions.
1. Draw the following thread profiles with proportions.
    - (a) Knuckle (b) Square
  2. Draw the locking nut by spring washer.
  3. Draw the following pipe fitting symbols.
    - (a) Globe Value (b) Tee (c) 90<sup>0</sup> Elbow (d) Reducer (e) Check Value
  4. Draw the following of the symbols welded joints
    - (a) Single bevel butt weld with board root face
    - (b) Single U-butt weld
    - (c) Backing weld
    - (d) Slot weld
    - (e) Flat (flush) single V-butt weld

**PART-B**

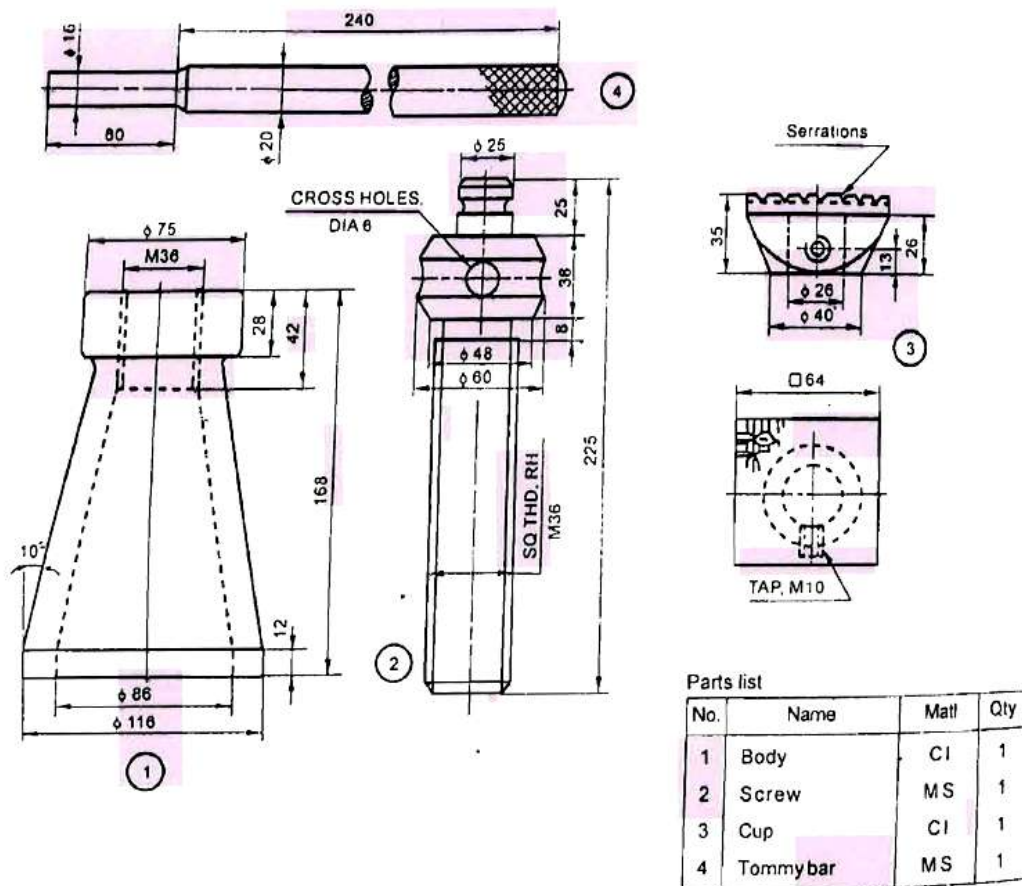
40X1=40

\*

- Instructions :**
1. Answer any **ONE** questions.
  2. Each question carries **Forty** marks.
  3. All dimensions are in mm and assume missing dimensions, if any.

5. The details of a SCREW JACK in fig (1). Assemble all the parts and draw the following.

- (a) Half-sectional front view
- (b) Prepare the bill of materials



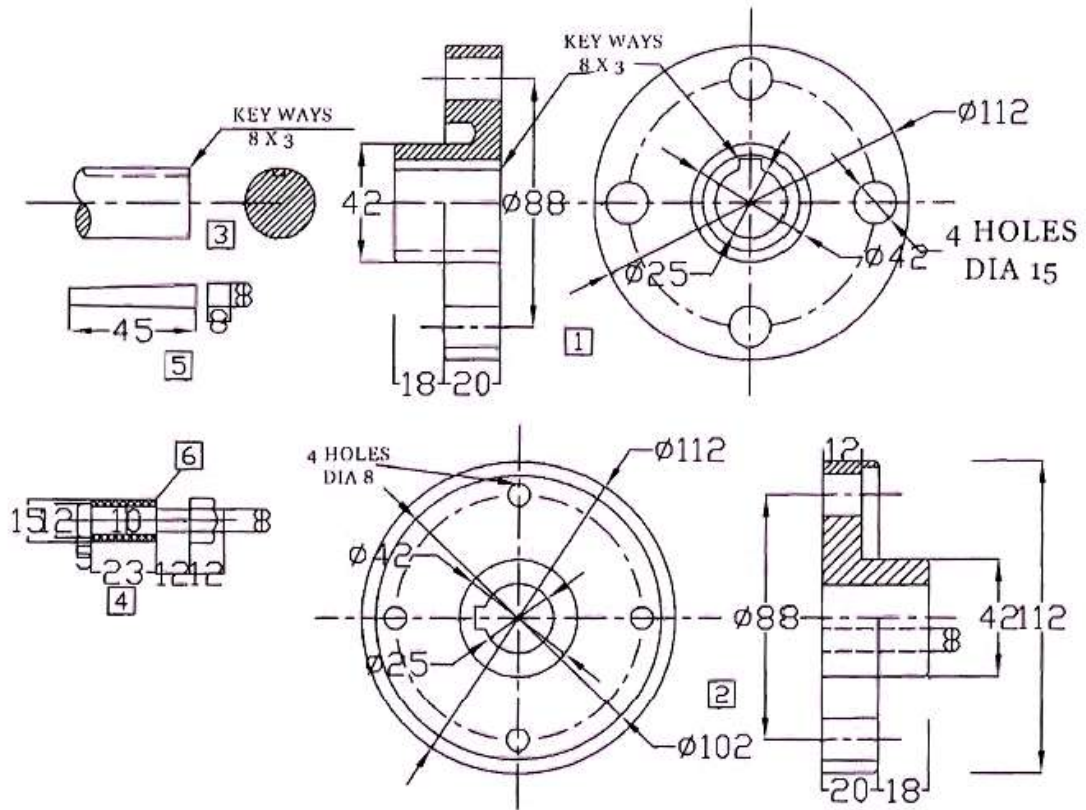
Screw jack (1)

6. Assemble all bushed pin type Flanged coupling shown in fig(2) and draw

(a) Half sectional front view

(b) Right view

(c) Dimensioning and Material table



S.No	Name	Mtl	Qty
1	FLANGE	CI	1
2	FLANGE	CI	1
3	SHAFT	MS	2
4	PIN WITH NUT	MS	4
5	FEATHER KEY	MS	2
6	BUSH	NYLON	16

Bushed pin type  
Flanged Coupling

Fig : 2

\*\*\*\*\*