



C14-M-307

4254

BOARD DIPLOMA EXAMINATION, (C-14)

MARCH / APRIL - 2019

DME - III SEMESTER EXAMINATION

MACHINE DRAWING PRACTICE

Time : 3 Hours]

[Total Marks : 60

PART - A

4×5=20

- Instructions :**
- (1) Answer **ALL** questions.
 - (2) Each question carries **FIVE** marks.
 - (3) Drawing should be neat and clear with the necessary dimensions.
 - (4) All dimensions are in mm.

1 Draw the following thread profiles with pitch 30mm $2\frac{1}{2} + 2\frac{1}{2} = 5$

according to proportions :

- (a) Knuckle
- (b) Seller's

2 Sketch the following rivet heads with suitable $2\frac{1}{2} + 2\frac{1}{2} = 5$

proportions, taking the diameter as 30 mm.

- (a) Snap head
- (b) Pan head

4254]

1

[Contd...

3 Give the single line representation of the following pipe fittings : $5 \times 1 = 5$

fittings :

- (a) Union
- (b) Plug
- (c) Cross
- (d) Gate Valve
- (e) Check Valve '

4 Show the weld symbols for the following : $5 \times 1 = 5$

- (a) Single 'J' Butt Weld
- (b) Backing Run
- (c) Spot Weld
- (d) Flat Single V Butt Weld
- (e) Concave Fillet Weld

PART - B

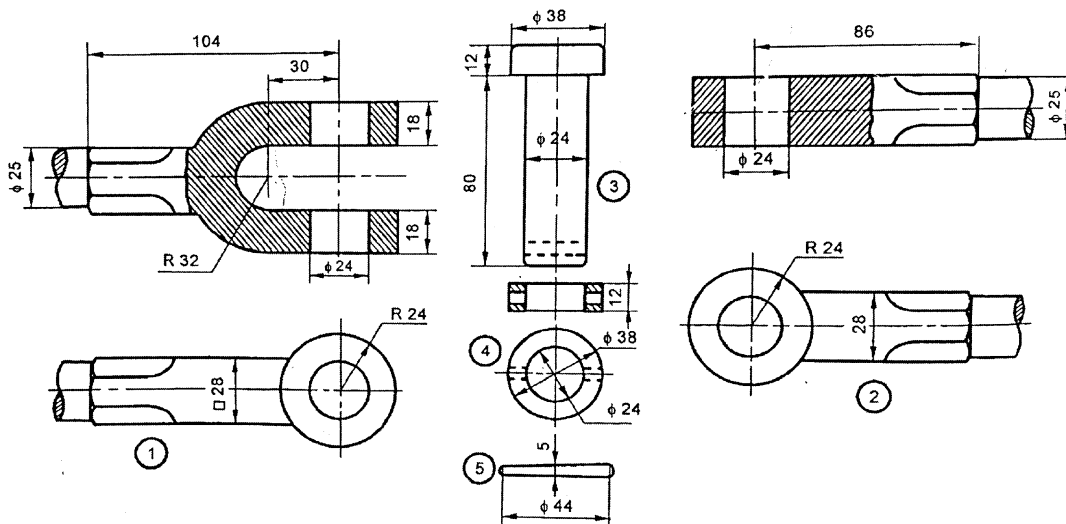
1×40=40

- Instructions :**
- (1) Answer any **one** and each question carries **fourty** marks.
 - (2) Answer should be neat and clear with all the necessary dimensions.
 - (3) All dimension are in mm.
 - (4) Choose suitable scale.

5 The details of Knuckle joint are shown in fig. 1. **25+15=40**

Draw the following assemble views in the first angle projection.

- (a) Full Sectional front view (b) Top View

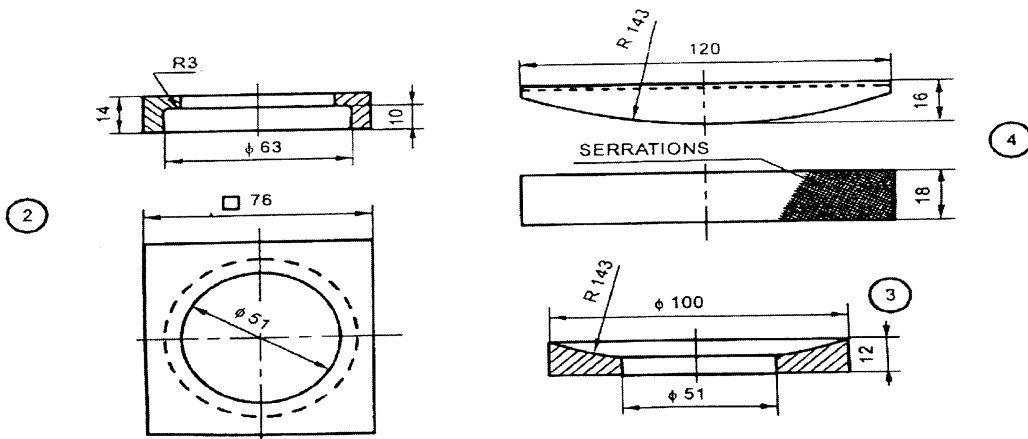
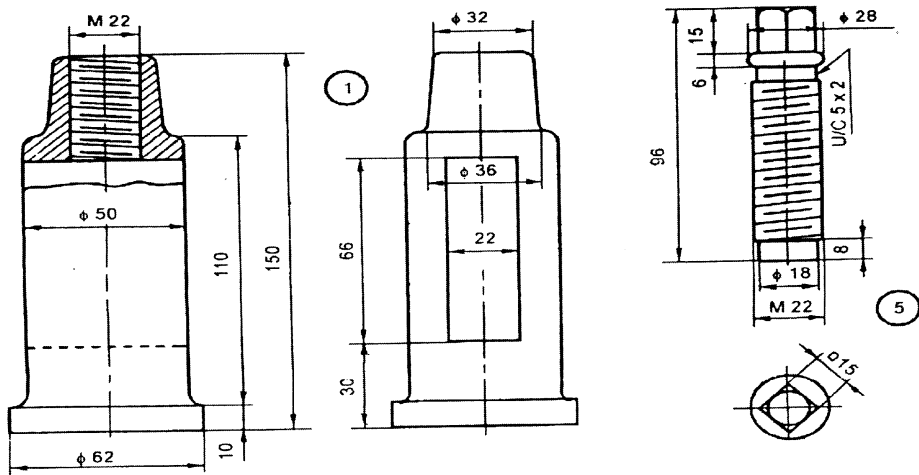


Parts list

No.	Name	Matl	Qty
1	Fork end	FS	1
2	Eye end	FS	1
3	Pin	MS	1
4	Collar	MS	1
5	Taper pin	MS	1

6 Assemble the parts of a lathe tool post as shown in Fig.2 and draw its following views :

(a) Half Sectional front view (b) Right Side View



Bill of materials

No.	Name	Matl	Qty
1	Pillar	MCS	1
2	Block	MCS	1
3	Ring	MS	1
4	Wedge	MCS	1
5	Screw	TS	1